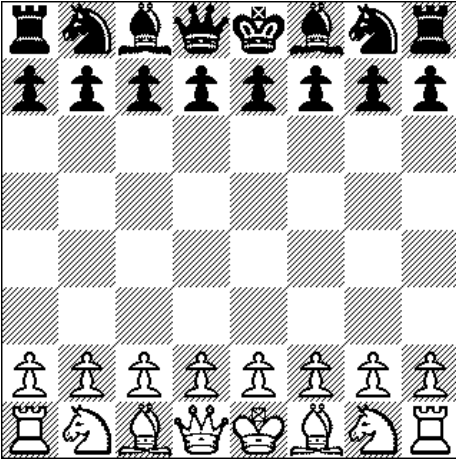


Chess Basics

First things first. Setting up the board.



Links:

Usefulchess.com

Beginners chess.com

B.C. Chess Federation

How Pieces Move

White moves first. Each player takes turns, moving one piece at a time. You may not skip your turn! Each pawn can move one or two squares forward on its first move only. After its first move that pawn may advance only one square at a time.

Although pawns move forward one or two squares on the first move only, after that they advance forward one square at a time only. Pawns always advance forward until they run into another piece. After that they cannot advance until that blocking piece is taken out of their way. However, a pawn always captures on a diagonal.

Concepts that every chess player should learn:

- **Protect your King.**
When checked, you will most likely be forced into making a move you weren't planning on making.
- **Advance your pieces.**
Every move you make should be aimed at placing a piece into a better attacking position. If you attack, attack, attack, your opponent is forced to defend, defend, defend!
- **Own the center.**
If you can place some pieces into the center of the board, and defend them with other pieces, this effectively gives you control of the center. Your opponent will be limited to advancing down the sides, thus limiting the effectiveness of any attacking piece.
- **Sacrifice if required.**
This sounds counterintuitive, but it may be of strategic advantage to relinquish a piece to bring an opponent's piece out into the open.